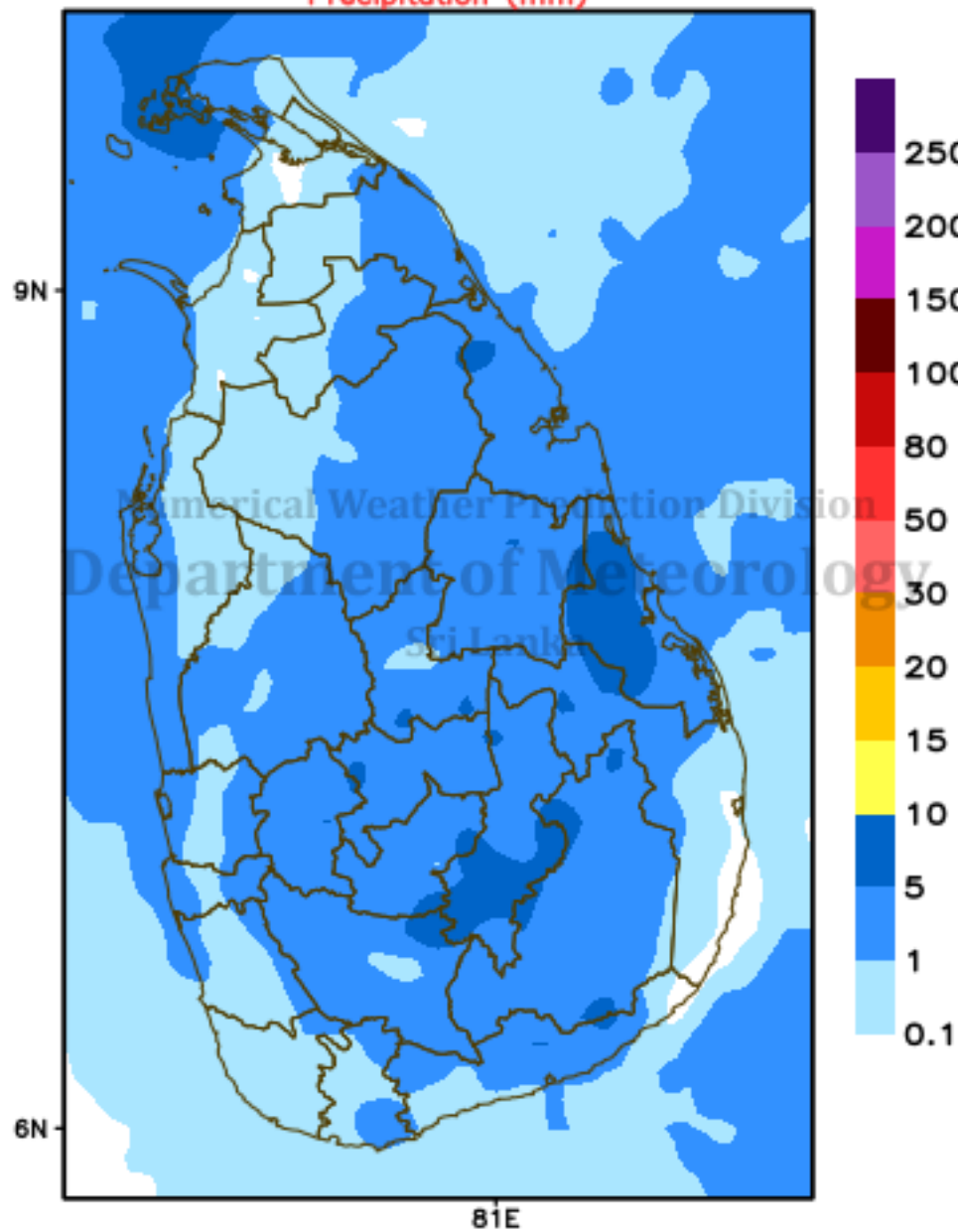
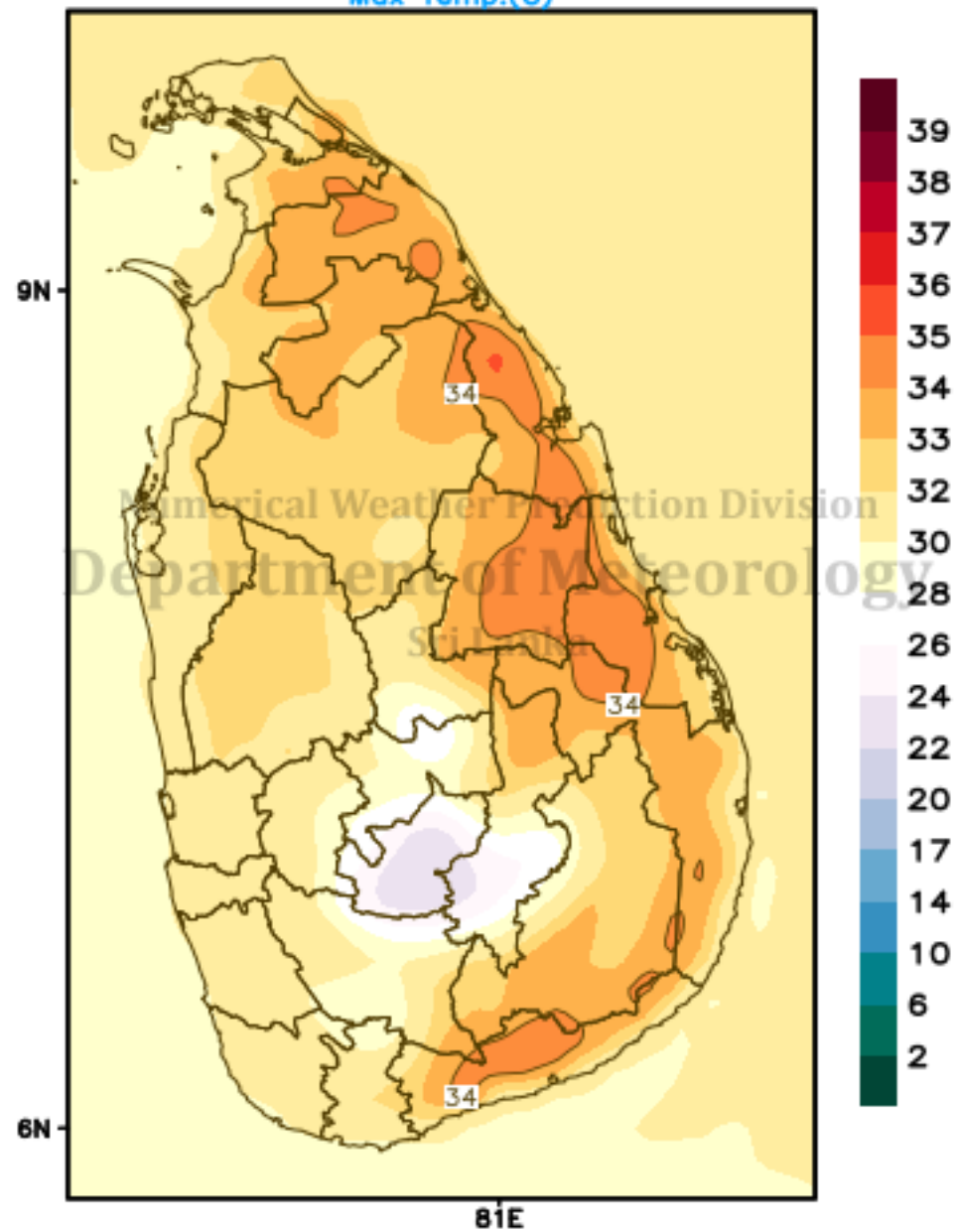


# ECMWF Forecast (24hr) valid for 00UTC of 18/05/2021

## Precipitation (mm)

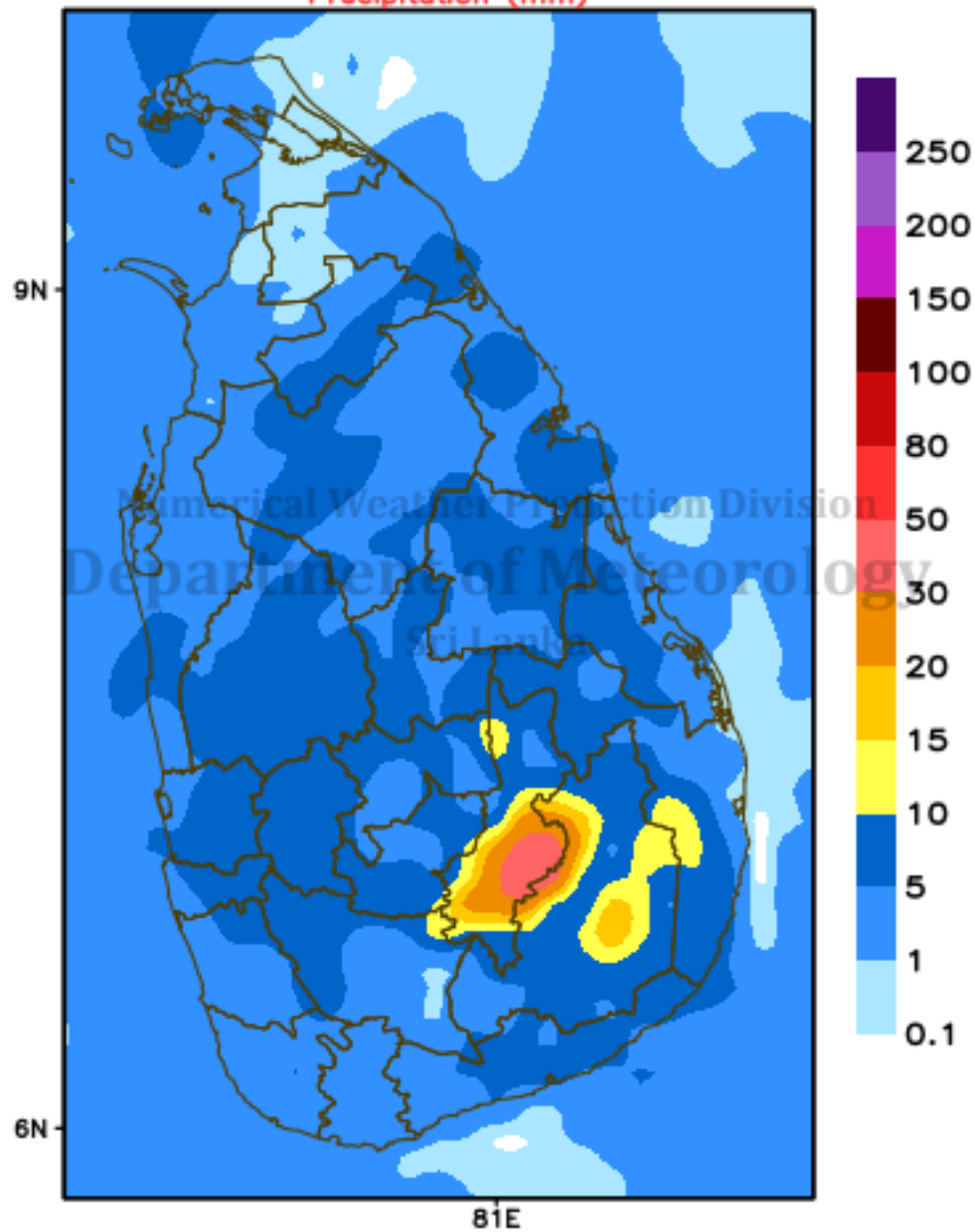


## Max Temp.(C)

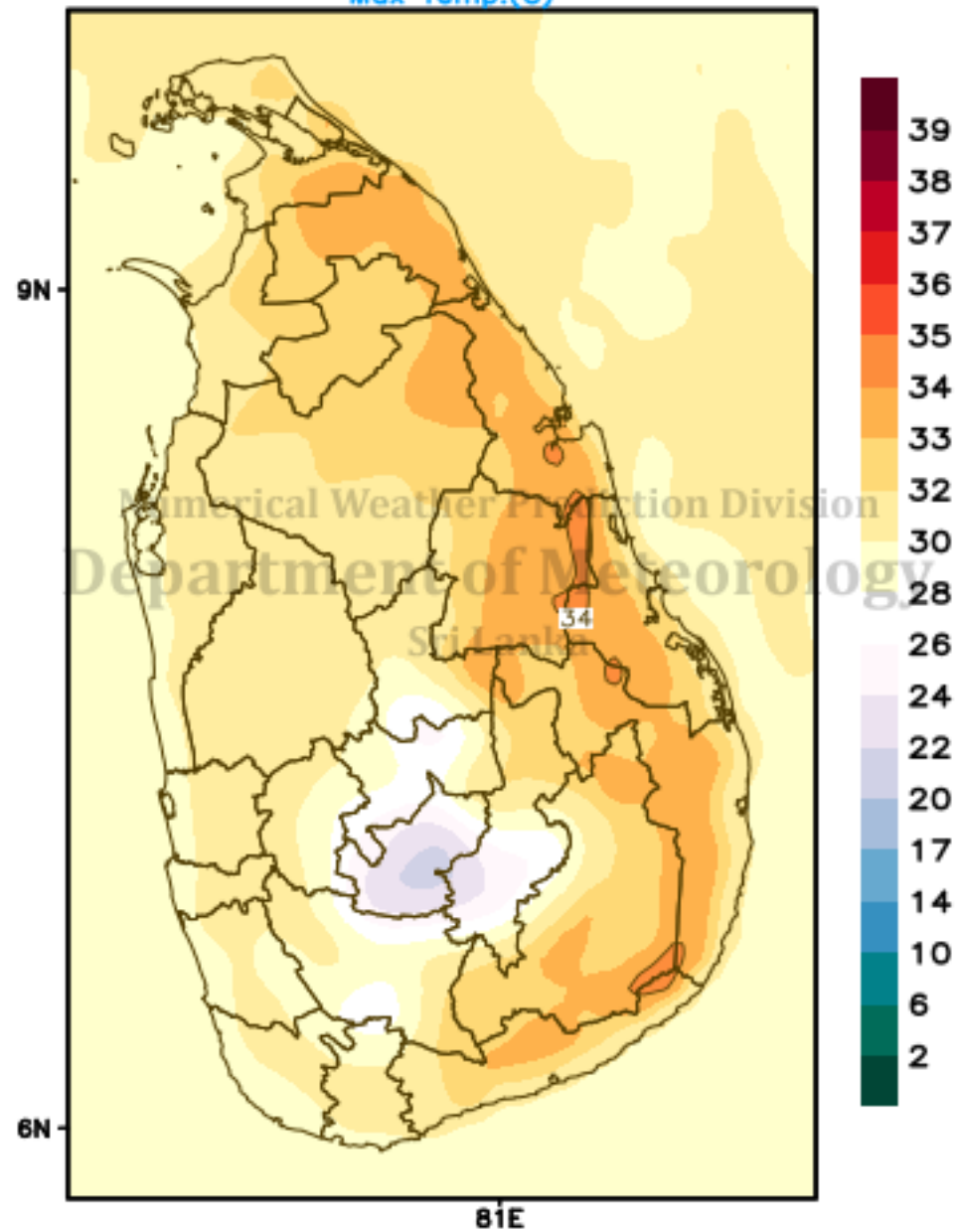


# ECMWF Forecast (24hr) valid for 00UTC of 19/05/2021

## Precipitation (mm)

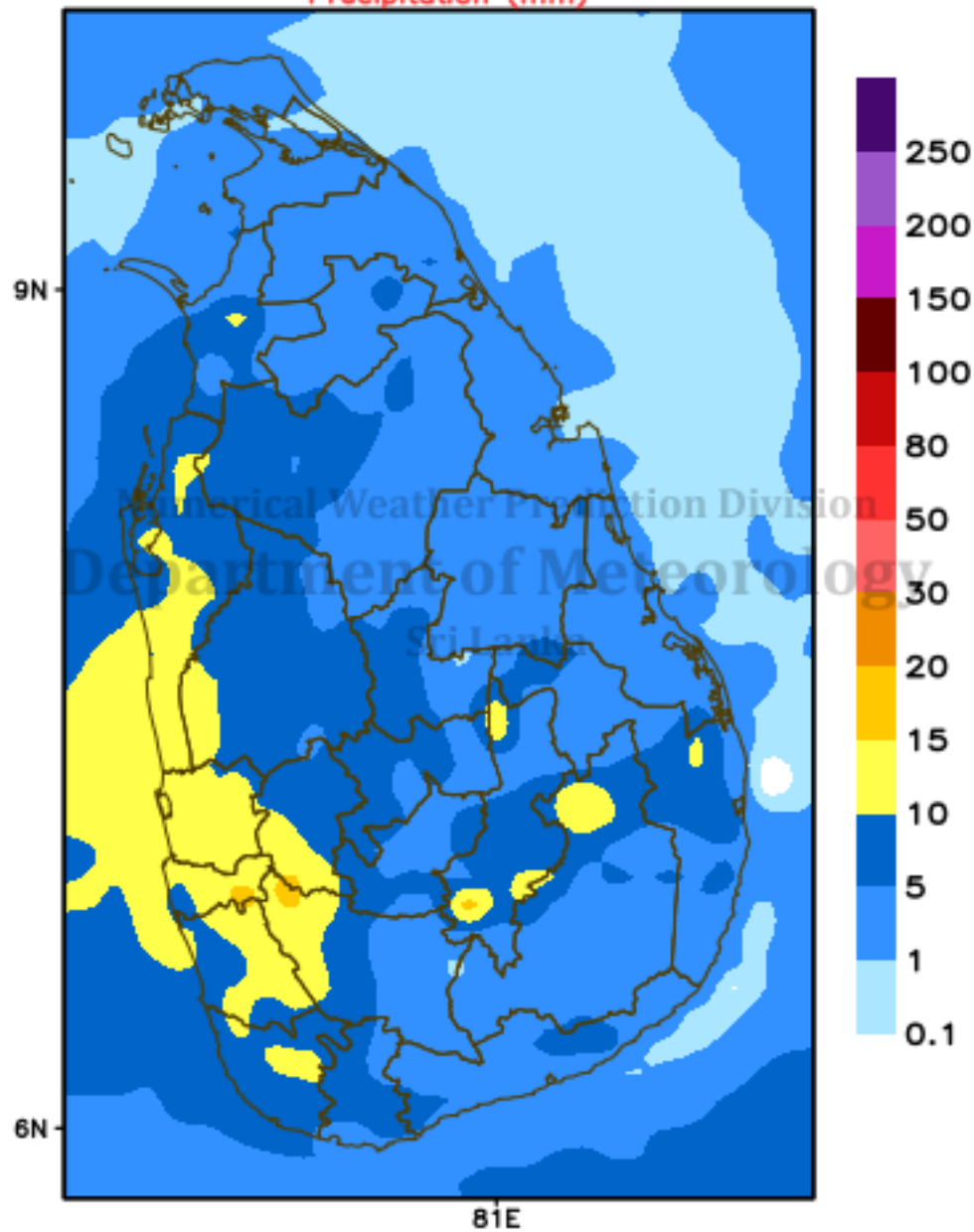


## Max Temp.(C)

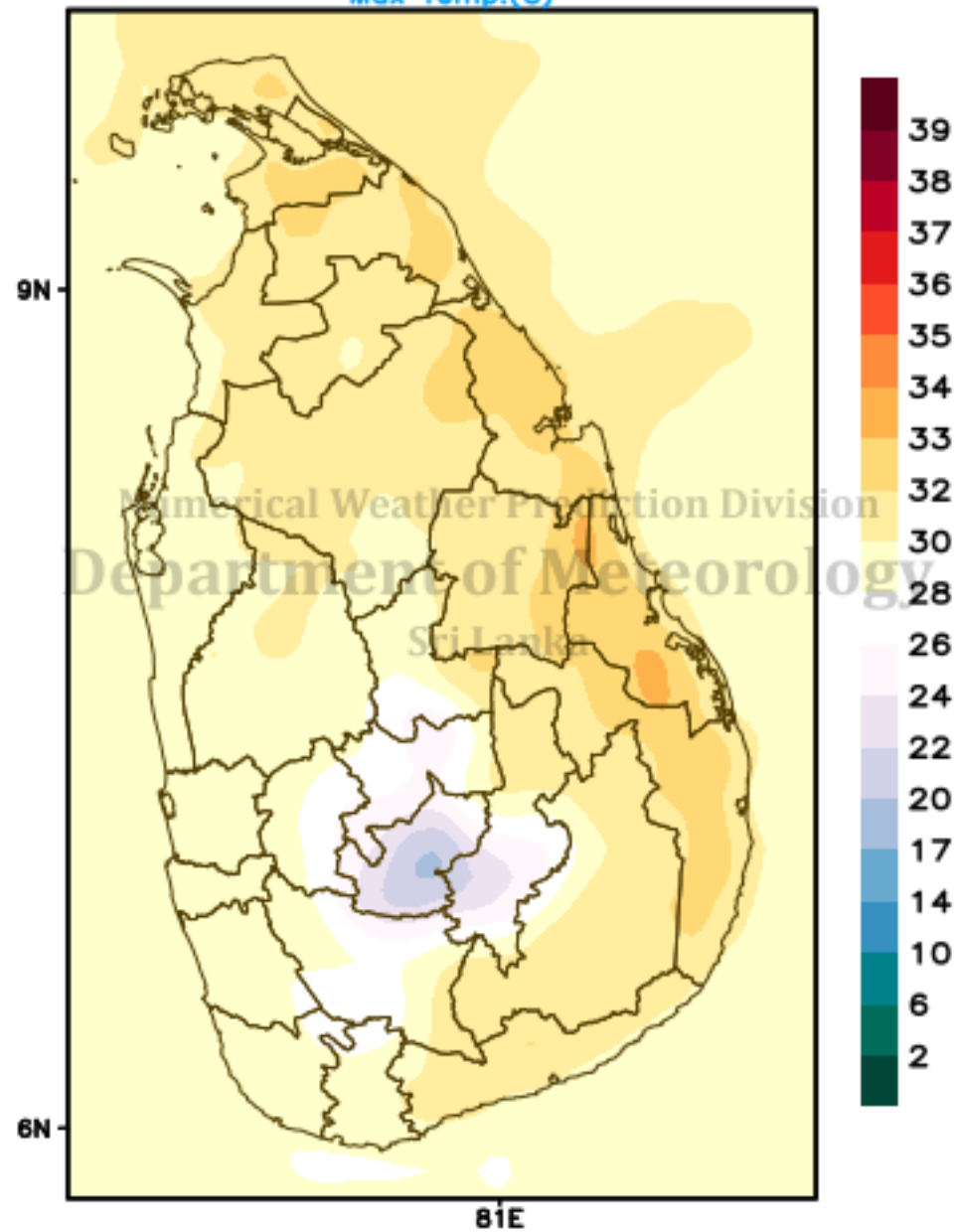


# ECMWF Forecast (24hr) valid for 00UTC of 20/05/2021

## Precipitation (mm)

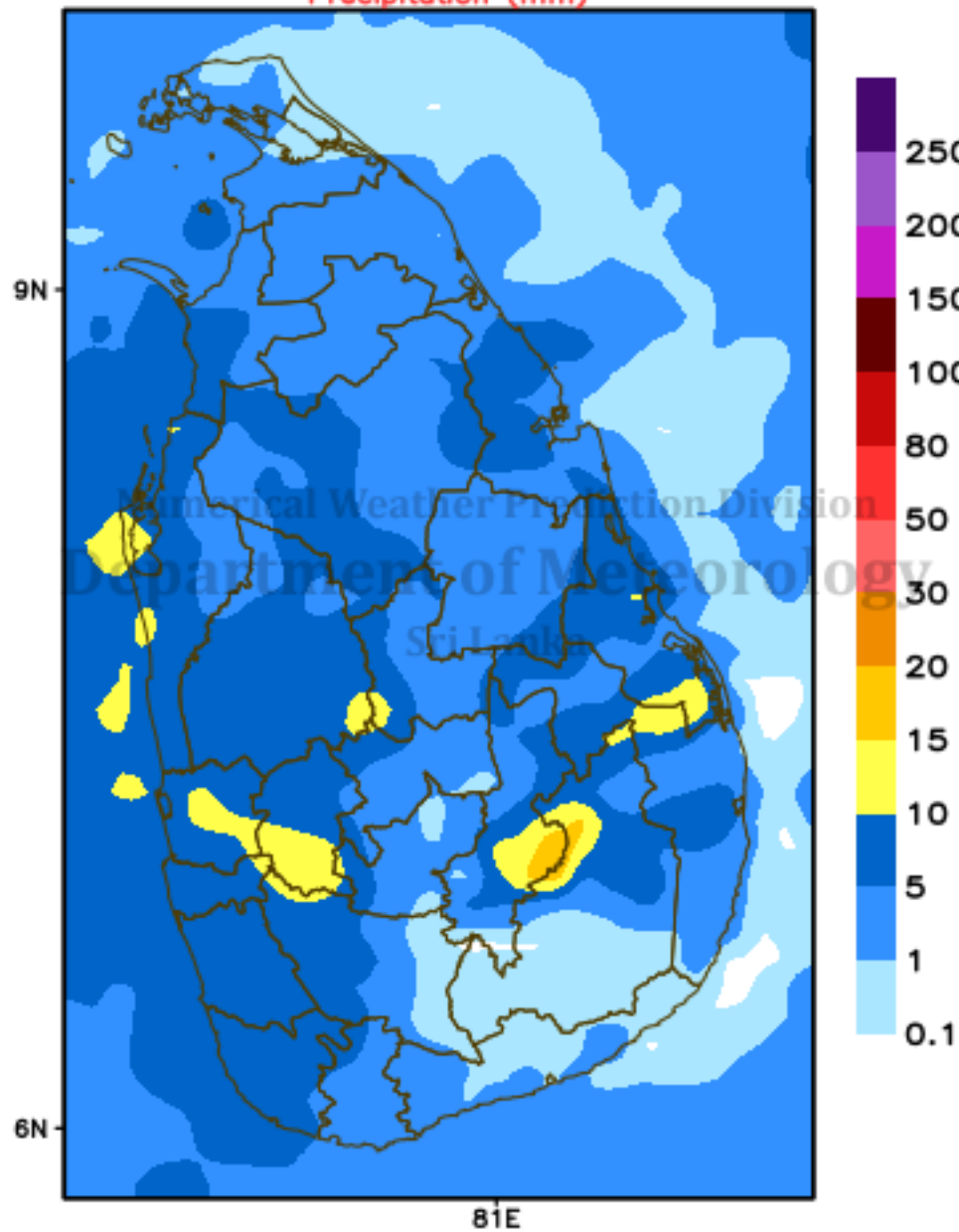


## Max Temp.(C)

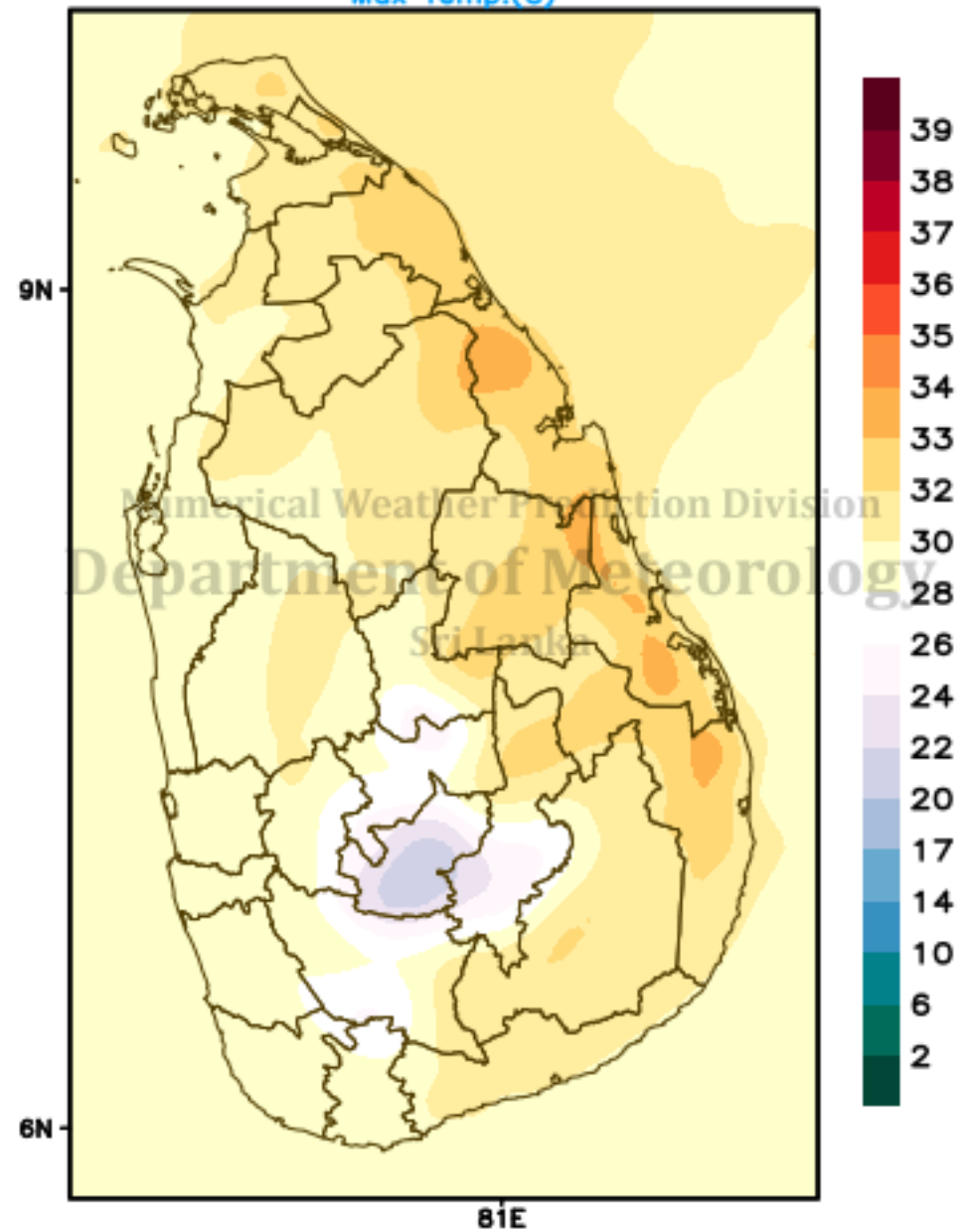


# ECMWF Forecast (24hr) valid for 00UTC of 21/05/2021

## Precipitation (mm)

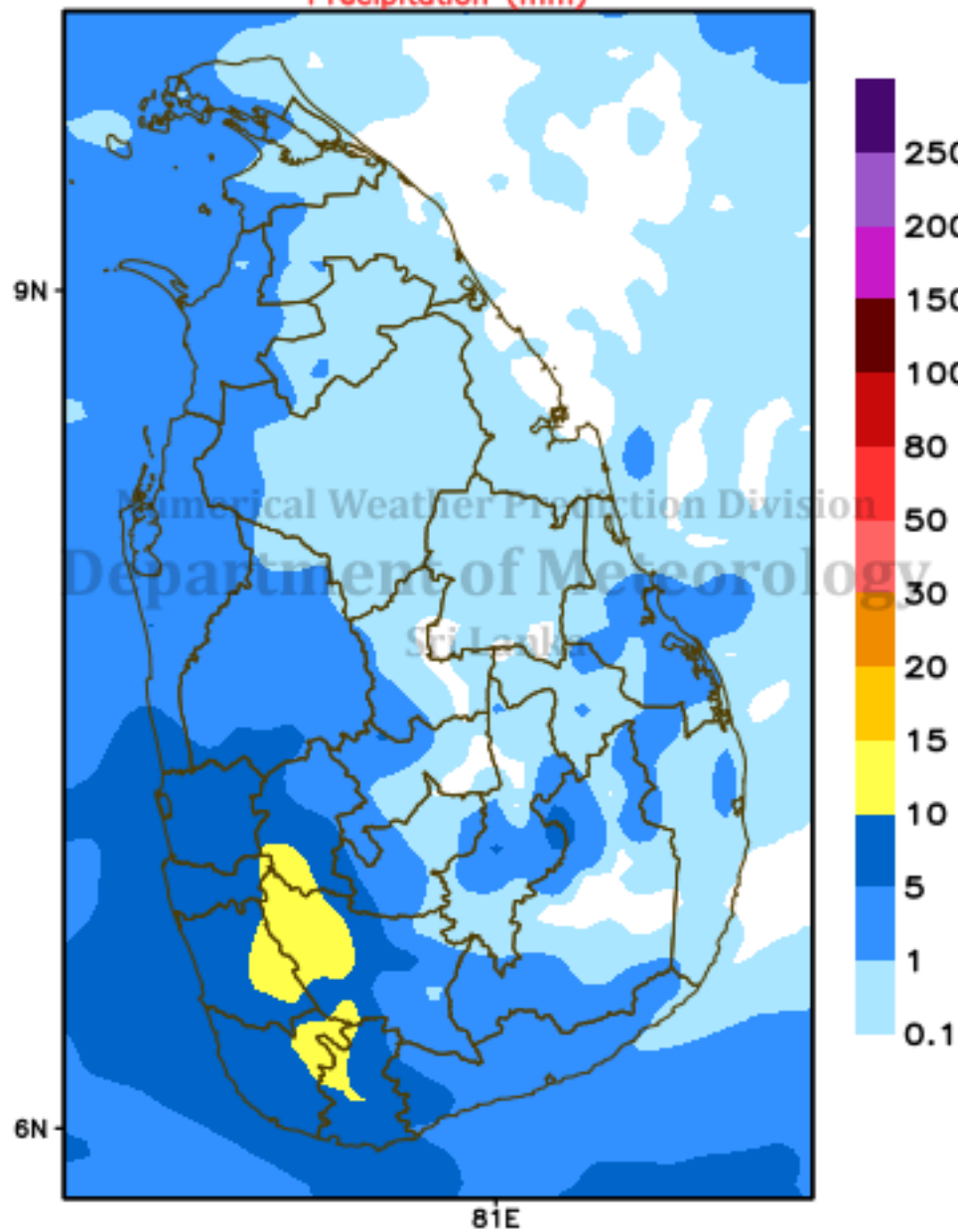


## Max Temp.(C)

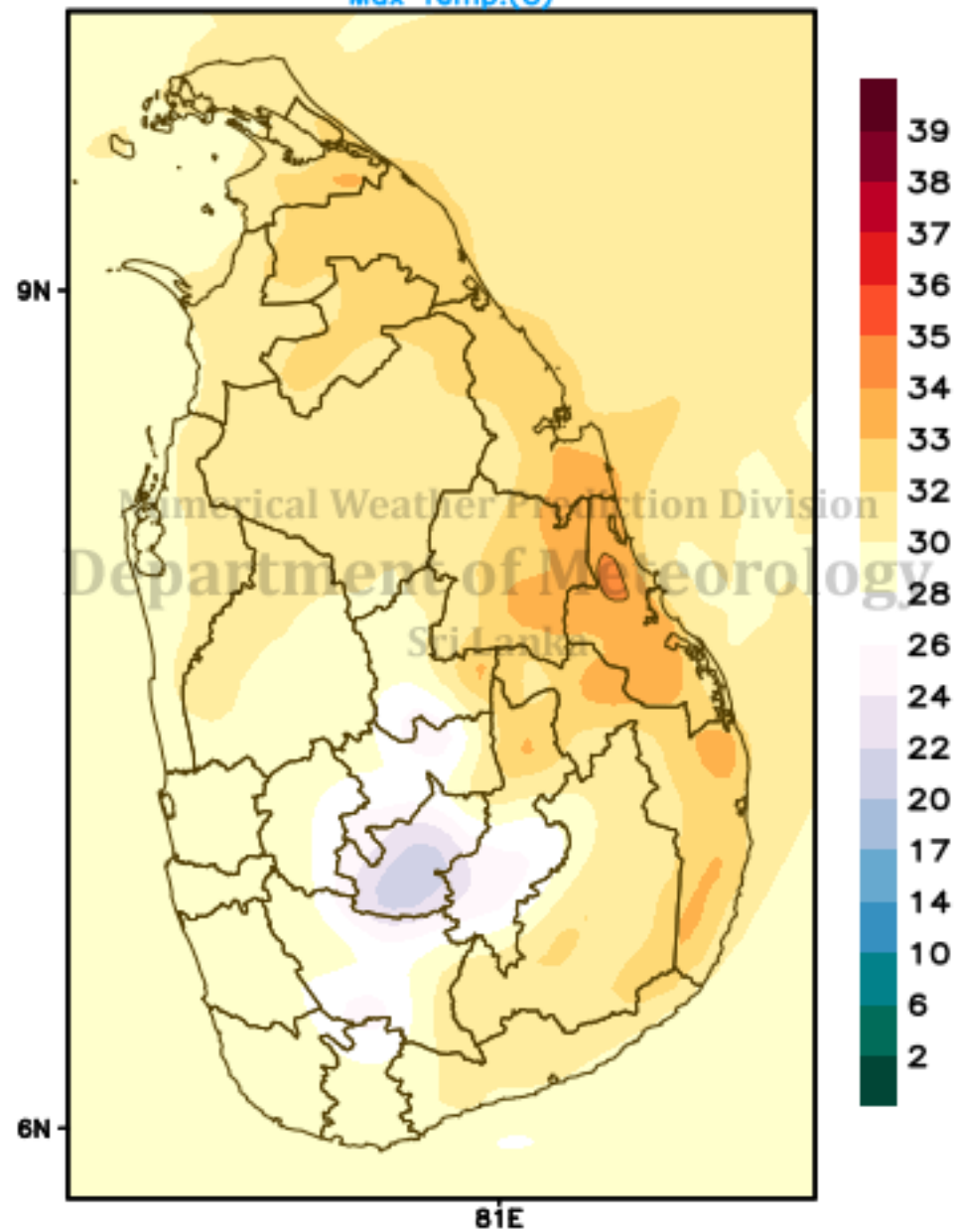


# ECMWF Forecast (24hr) valid for 00UTC of 22/05/2021

## Precipitation (mm)

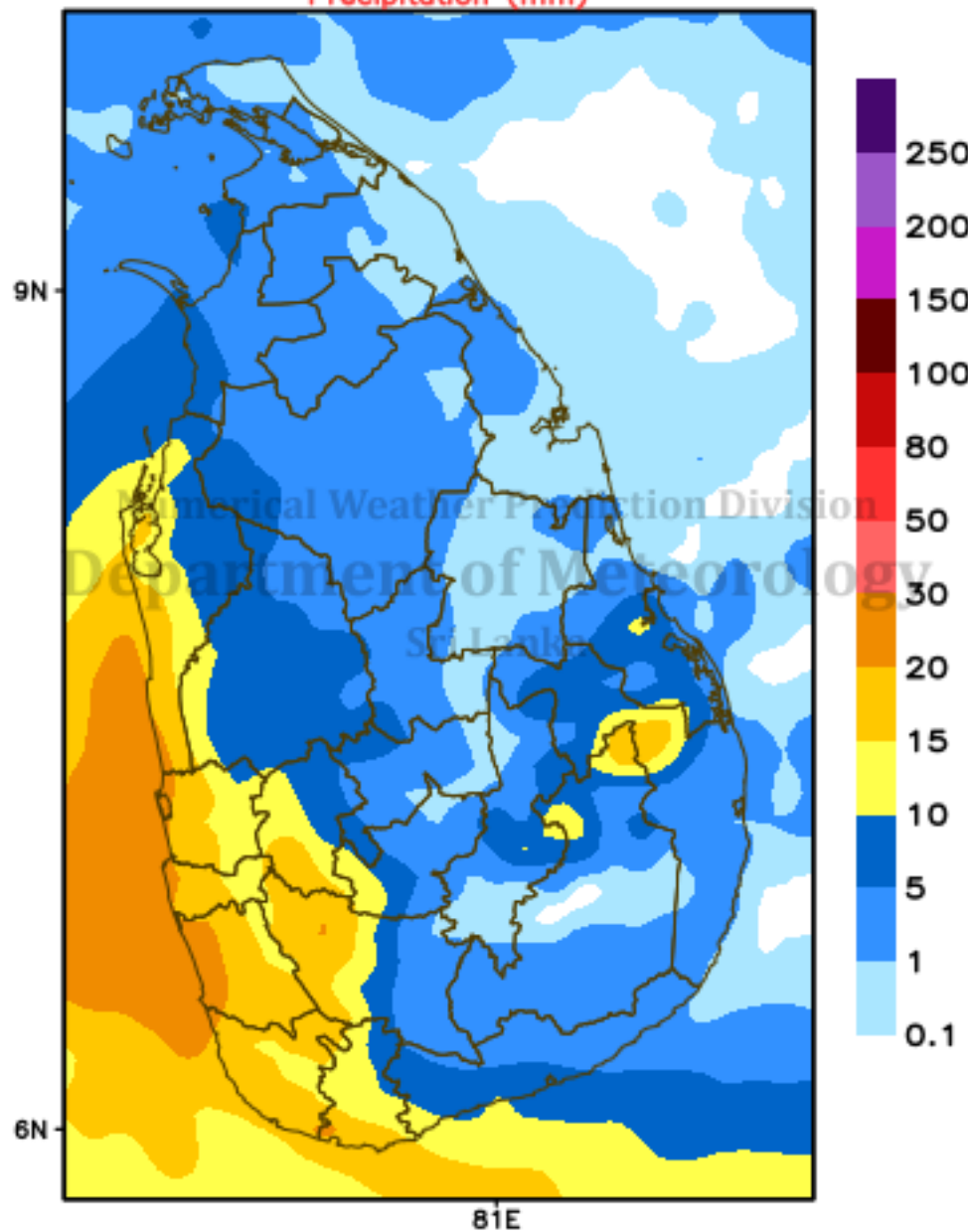


## Max Temp.(C)

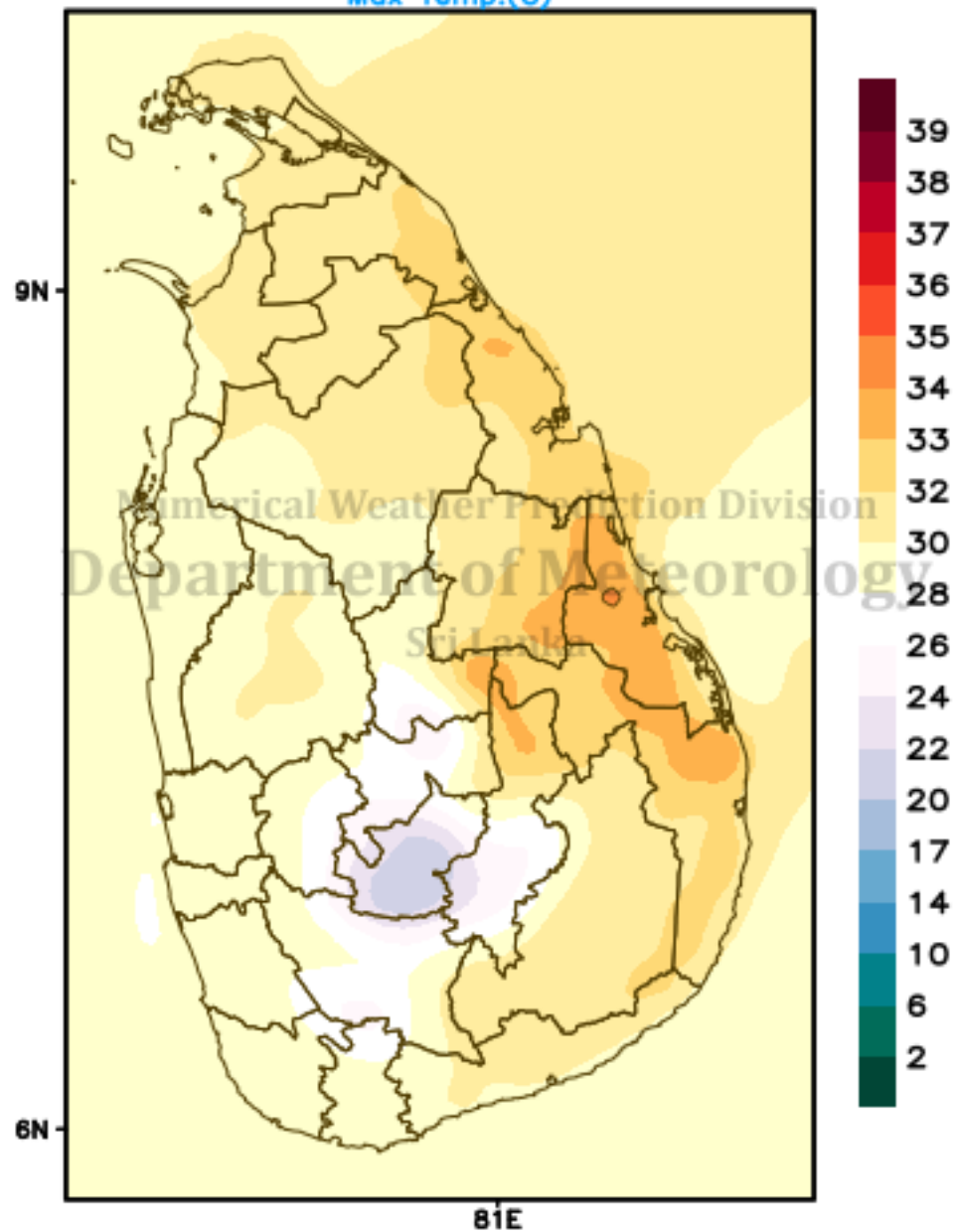


# ECMWF Forecast (24hr) valid for 00UTC of 23/05/2021

## Precipitation (mm)

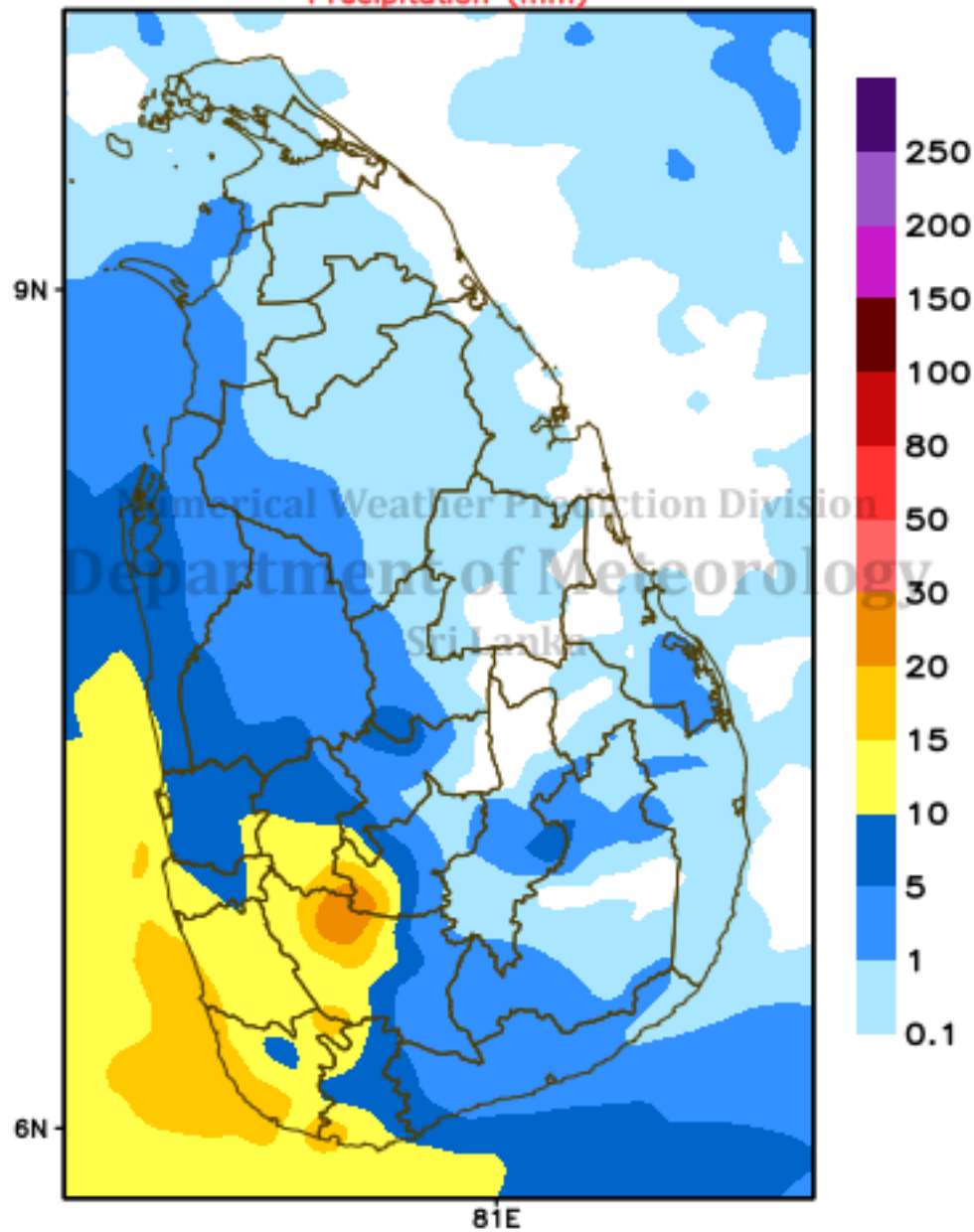


## Max Temp.(C)

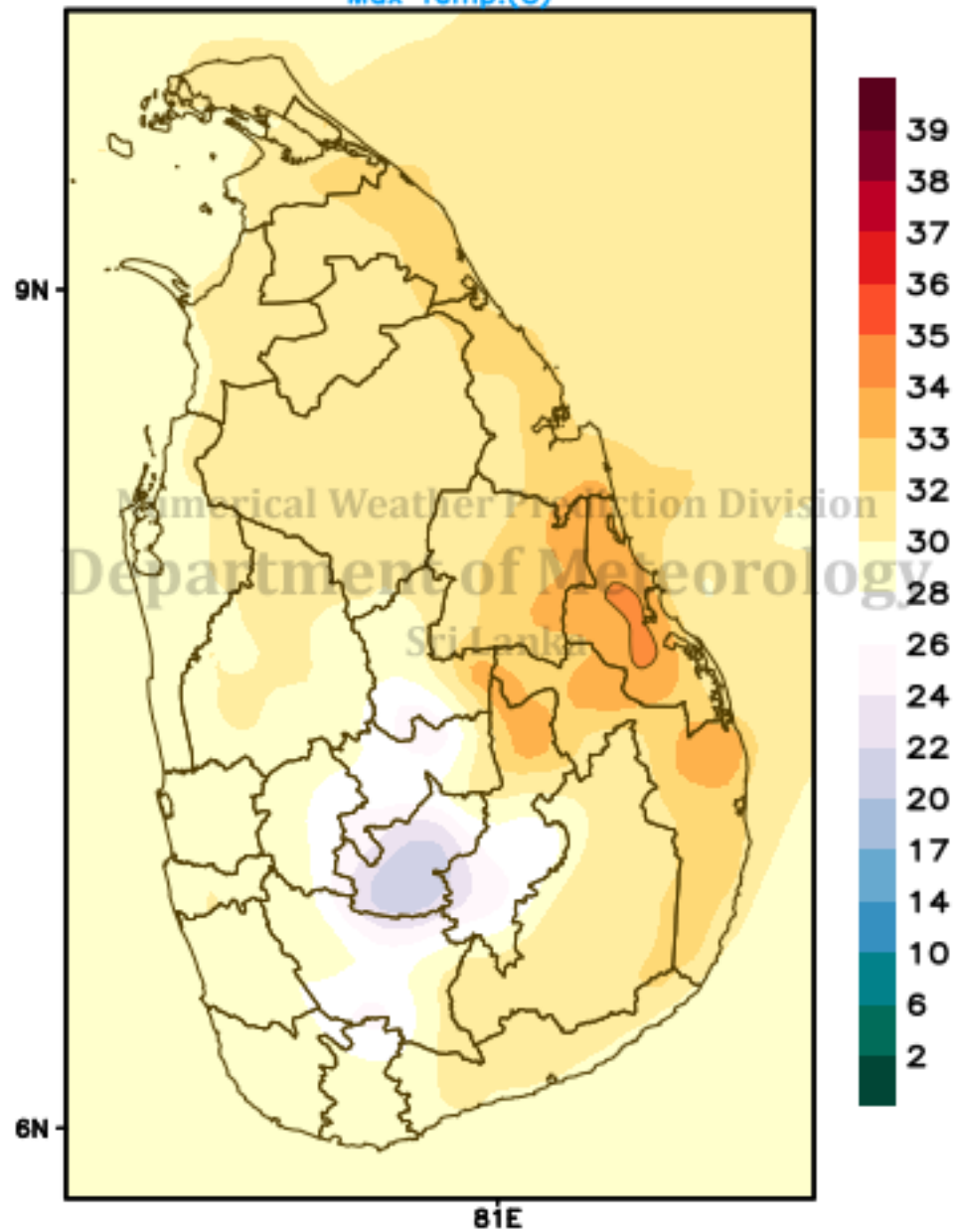


# ECMWF Forecast (24hr) valid for 00UTC of 24/05/2021

## Precipitation (mm)

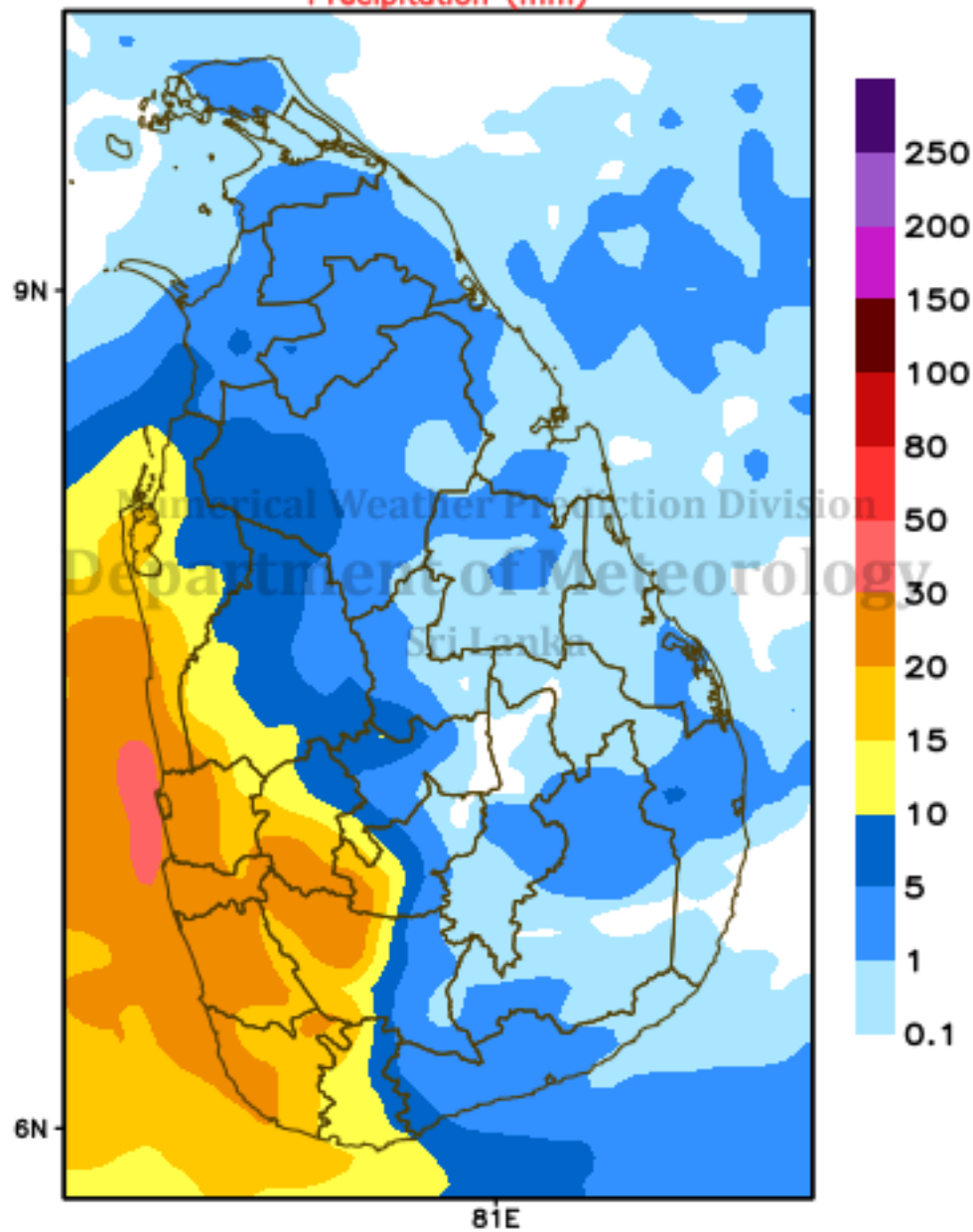


## Max Temp.(C)

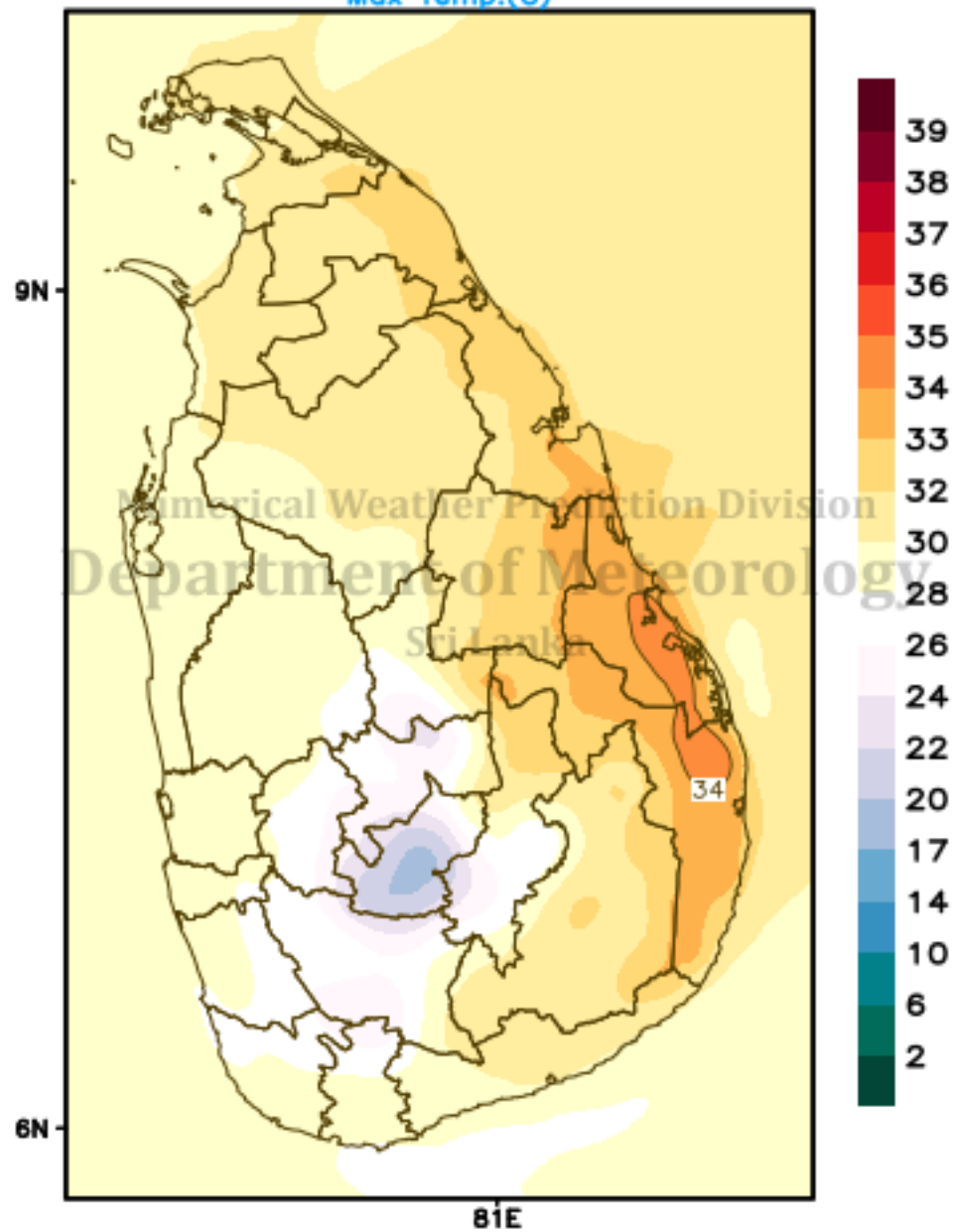


# ECMWF Forecast (24hr) valid for 00UTC of 25/05/2021

## Precipitation (mm)



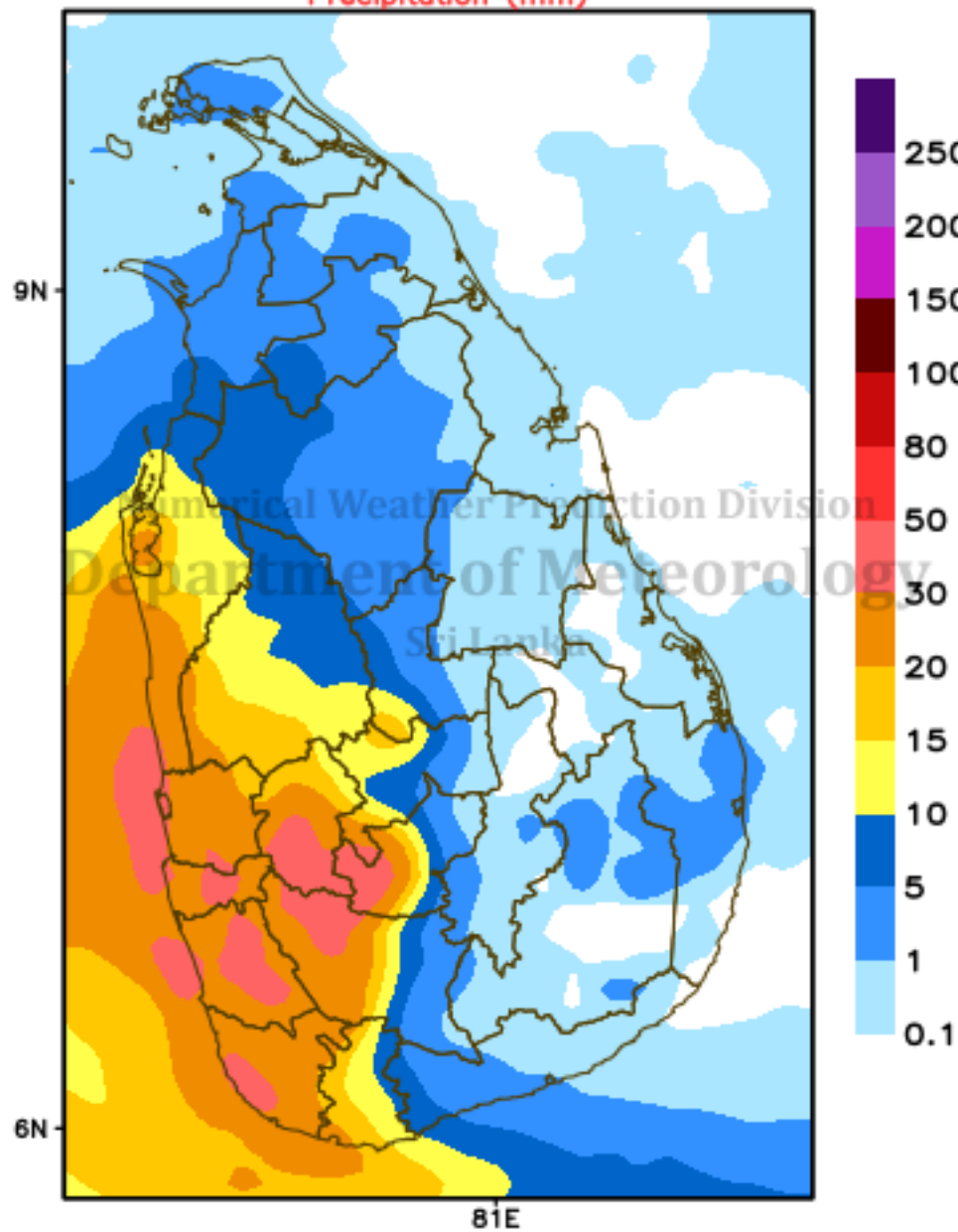
## Max Temp.(C)





# ECMWF Forecast (24hr) valid for 00UTC of 26/05/2021

## Precipitation (mm)



## Max Temp.(C)

